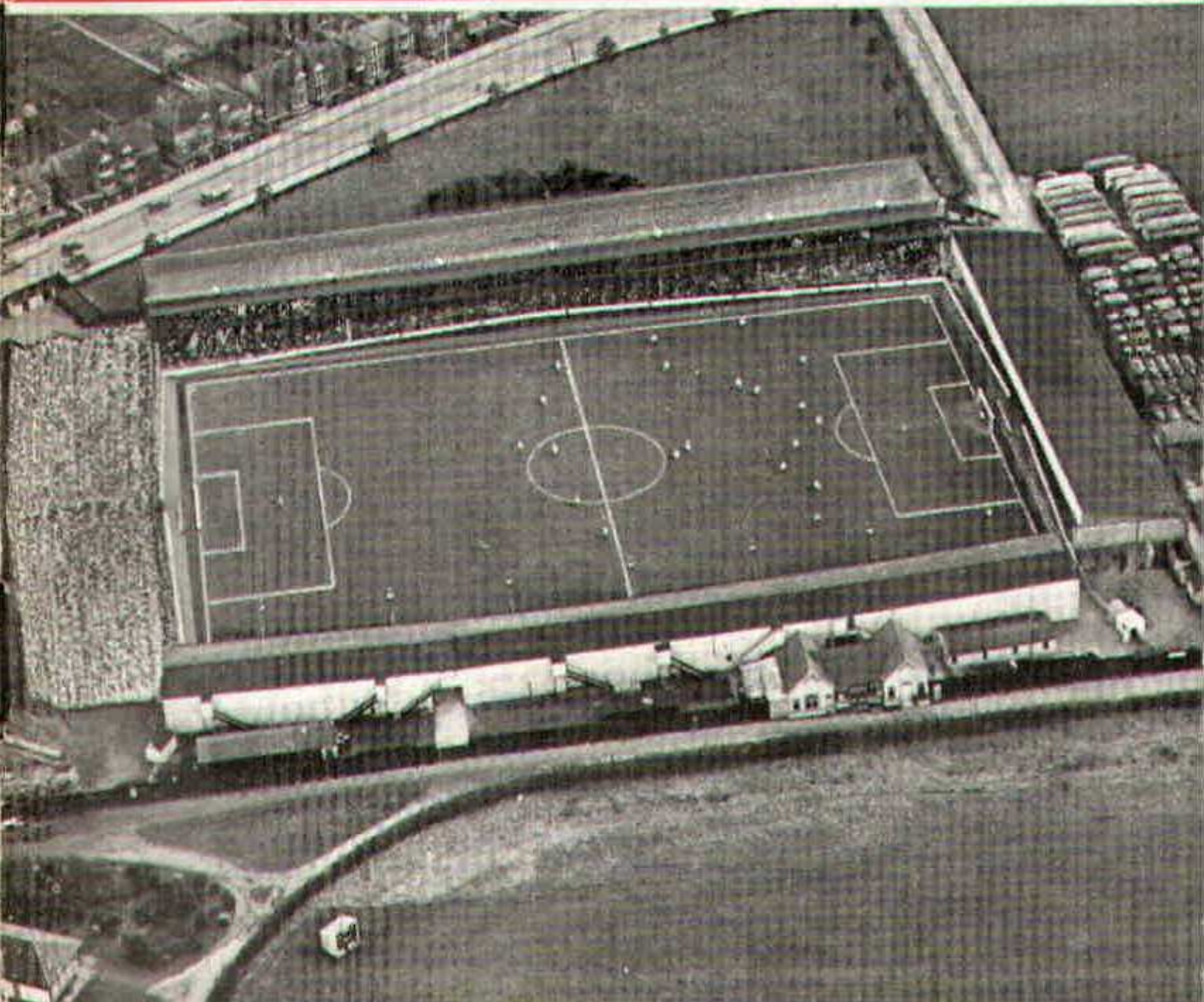


SWINDON TOWN



FOOTBALL CLUB

OFFICIAL PROGRAMME 6d.



**FURNITURE AND FURNISHINGS
OF CHARM AND DISTINCTION**



CARPETS - FLOORCOVERINGS
LOOSE COVERS - CURTAINS
SKILLED WORKSHOP REPAIR SERVICE
AND REMOVALS



Contractors to Government Departments, Hospitals
and Borough Councils

MILLS & MERRICKS LTD.

16-17 BRIDGE STREET, SWINDON

TELEPHONE 5365/6

SATURDAY, 12th JANUARY, 1963

DIVISION III

SWINDON TOWN

v.

QUEEN'S PARK R.

Kick-off 3 p.m.

REFEREE:

Mr. N. N. HOUGH (Littleborough)

LINESMEN:

Red Flag -

Mr. G. A. J. BELL (Southampton)

Yellow Flag -

Mr. K. R. B. HALE (Bristol)

for fine printing
you should have
a fine printer

BOROUGH PRESS (SWINDON) LTD

Maylott Studios

For **GROUP & SPORT** Photographs

Official Photographer to
Swindon Town Football Club

31 FARINGDON ROAD

TEL. 22792

NOTTON'S CAFE

COUNTY ROAD

200 yards from Ground

RIGHT ON THE BALL

C. DUNN & SON

BUILDERS & DECORATORS

Alterations, Renovations, Conversions

Plumbers & Sanitary Engineers

503 CRICKLADE ROAD

TEL. 22522

LEESE, ING & Co. Ltd.

Mineral Water and
Squash Manufacturers

Lansdown Rd., Swindon

Telephone 22744

"COALI"
"COALI"
"COALI"

J. WILMER

**ST. MARGARET'S ROAD
SWINDON**

Telephone 22535

L. Wollen

OFF LICENCE

WINES and SPIRITS

Arkell's Ales and Stout

373 Cricklade Rd., Swindon
Deliveries Daily Phone 3508

SWINDON TOWN FOOTBALL COMPANY LIMITED

Registered Office: COUNTY GROUND, SWINDON.

Directors:

Mr. W. J. CASTLE (Chairman)

Mr. H. E. LANE (Vice-Chairman)

Mr. B. T. HAMILTON (Hon. Treasurer)

Messrs. C. CHANDLER, J.P., J. DAVIES,

R. FRICKER, C. J. GREEN, F. PLYER, H. WILLIAMS and K. H. WILMER

Manager: B. J. HEAD

Secretary: R. A. MORSE

VOL. 13

SATURDAY, JANUARY 12th, 1963

No. 15

CLUB NOTES

Not a very happy Christmas or New Year for Swindon Town F.C. Saturday, 22nd December, 1962, in company with many other clubs, match abandoned due to fog.

Christmas Day, 3 p.m. amidst the frost and cold, a cheerful little party set off for Sheffield, to stay overnight for the game at Bradford. Boxing morning, Racing cancelled, news coming in at regular intervals of matches abandoned. Was this to be a repeat of 1961? We returned from Halifax, without really seeing the pitch. This time we were a little more fortunate in so much that we were able to play, even if the conditions were very difficult. However, we lost 0-2, so no points over the holiday period.

WILSONS (SWINDON) LTD.

BUILDERS OF MODERN ATTRACTIVE
HOUSES AND BUNGALOWS

Enquiries to:

Head Office: 90 COMMERCIAL ROAD, SWINDON 6361

Site Office: COVENTRY FARM ESTATE, WROUGHTON 271

Site Office: QUEENSFIELD ESTATE, STRATTON S.M. 3405

The Rendezvous of all Sportsmen -

THE CROWN INN

(Host: Frank Plyer)

Arkell's Best Ales : Fully Licensed

Snacks, etc.

Stratton St. Margaret Tel. 2339

Always at your service

L. BIBBY

For all Types, Rags, Iron and Metal,
etc. Spot Cash Paid. Please Tel.
2101 and our van will call.

THE PADDOCK, ERMIN STREET
STRATTON ST. MARGARET

FISH

POTATOES

**T. QUALITY (Swindon)
LTD.**

Wholesale Merchants

COLLEGE STREET

TEL. 5446/7

For Best Quality Wet Fish
9 a.m. - 6 p.m. (except Mondays)

YORK ROAD FISHERIES

Frying Mid-day Tuesday, Thursday,
Friday and Saturday

Phone 3680

MARSHGATE GARAGE

MOTOR ENGINEERS :: ROOTES GROUP DEALERS

STRATTON ROAD - SWINDON - WILTS.

Tel. Swindon 22788

TWO MINUTES FROM GROUND

CLUB NOTES - continued

The Combination game at Birmingham was played on Saturday, 22nd December, although some fog prevailed throughout the game. Our hopes were high, as on the previous Wednesday Swindon had won at Portsmouth. This time, however, the old story came true—"After the Lord Mayor's Show". The game was most disappointing, none of our players showing any sort of form. The hospitality of the Birmingham Club was something everyone in the party will remember.

One bright spot: our "A" team, composed of very young players, average age not above 16 years, won 5-0 at Purton in the Wiltshire Premier League.

Such is the sad story of the actual football. Not since Boxing Day have we fielded one team. However, the picture is brighter than it would appear.

On Tuesday, 18th December, 1962, the Board of Directors was entertained by the Supporters' Club at a very bright and happy function. The evening was thoroughly enjoyed by all.

PANKHURST

The Palace - Gorse Hill - Swindon

MOTOR CYCLE - SCOOTER AND
THREE-WHEELER SPECIALISTS

Open Mon. to Sat. 9 a.m. - 8 p.m.

Phone 5466

Their kit is supplied by

SWINDON SPORTS CENTRE

WHO HAVE THE BEST SELECTION

Tel. 4270

114 COMMERCIAL ROAD

IVOR MESSENGER & SONS

High-Class Family Butchers

QUALITY WITH ECONOMY :: FAIREST PRICES IN TOWN

1 COLLEGE STREET, SWINDON

Tel. 5647

£10 **TYPEWRITERS** from **£10**

FULLY GUARANTEED

Also full selection new standard and portable typewriters
OFFICE EQUIPMENT

DOBELL SHEARMAN
& Co. Ltd.

26 High Street & 33 Faringdon Road, Swindon.

Tel. 4961/2

CLUB NOTES—continued

During the proceedings a presentation took place of a cheque value £5,000. We are sure we need not comment on what the money will be, or has been spent on. A real godsend indeed. Certainly the motto is absolutely true—"To help and not to hinder".

Another cheerful note! Although we have not obtained a point to add to our total of twenty-eight, this time last year we occupied seventeenth position in the table, with the following details:

P.	W.	D.	L.	F.	A.	Pts.
25	6	9	10	41	47	21

Let us take heart, and go forward with great hopes in 1963.



KEN McPHERSON

For Quality FLOWERS - FRUIT - VEGETABLES
also FROZEN FOODS

CLARKE'S of Old Swindon

Proprietors: A. G. G. and J. A. W. HUNT

64 DEVIZES ROAD - SWINDON

Phone 22337

ORDERS DELIVERED

SEA VIEW CAMP

Camp Road, Wyke Regis, Weymouth. Tel 3351

Site overlooks Chesil Beach - Ideal for Camping Parties
Also Modern Caravans for Hire

Swindon Bacon Curing Co. Ltd.

Specialists in

BACON - PORK - COOKED HAM

50 FLEET STREET, SWINDON

Telephone 22122

Meet your friends for an enjoyable evening at

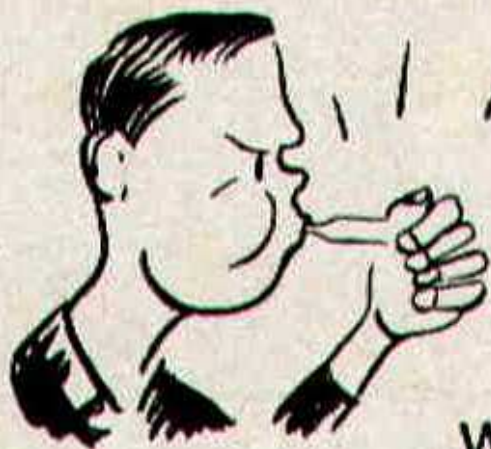
THE KINGSDOWN INN

(Host A. W. Vann)

FULLY LICENSED - ARKELL'S BEERS
SNACKS - Etc.

STRATTON ST. MARGARET

Tel. 3283



At the FINAL WHISTLE

WHETHER YOU FEEL



Sad



Mad or *Glad*



**PLEASE
DO NOT CROSS THE
PLAYING PITCH**

THE FOOTBALL COMBINATION

Mid-Week Section

	P.	W.	D.	L.	F.	A.	Pts.
Birmingham City	16	10	5	1	41	14	25
Millwall	14	9	2	3	29	13	20
SWINDON TOWN	16	7	5	4	35	28	19
Chelsea	18	5	9	4	28	24	19
Portsmouth	14	8	2	4	38	19	18
Leyton Orient	15	9	0	6	40	24	18
Southampton	16	7	2	7	29	26	16
Coventry City	15	6	4	5	23	23	16
Brentford	14	6	3	5	31	21	15
Southend United	16	6	3	7	37	36	15
Watford	16	5	5	6	27	31	15
Bournemouth & Boscombe	16	5	5	6	22	32	15
Brighton & H.A.	17	6	2	9	19	28	14
Queen's Park R.	14	5	3	6	30	29	13
Fulham	16	5	3	8	18	31	13
Charlton Athletic	17	5	1	11	29	60	11
Aldershot	14	4	2	8	16	35	10
Reading	14	1	4	9	20	38	6

B. J. MARTIN & SONS LTD.

Butcher

10 HIGH STREET
MARLBOROUGH
Phone 212

126 VICTORIA ROAD
SWINDON
Phone 4860

CLARK BROS. (SWINDON) LTD.

**BUILDING AND CIVIL ENGINEERING
CONTRACTORS
SWINDON**

Telephone: Swindon 3417/8/9

Do not let **CHILBLAINS** spoil a good game

RELAPERNE

Price 2/6 from your CHEMIST

2/10 Post Paid from

Ballard & Co. (Chemists) Ltd., Faringdon, Berks.

DIVISION III LEAGUE TABLE

	P	W	D	L	F	A	Pts.
Peterborough	27	14	6	7	55	44	34
Watford	26	14	2	10	59	44	30
Bournemouth	25	10	10	5	34	26	30
Coventry City	25	10	10	5	49	40	30
Notts County	25	12	6	7	36	37	30
Northampton	24	11	7	6	54	36	29
Queen's Park R.	23	11	6	6	50	30	28
SWINDON TOWN	24	10	8	6	46	31	28
Southend Utd.	25	13	2	10	46	46	28
Port Vale	25	10	7	8	35	30	27
Hull City	25	11	5	9	46	40	27
Shrewsbury Tn.	26	9	8	9	58	52	26
Wrexham	23	11	2	10	46	49	24
Bristol City	25	8	7	10	52	51	23
Colchester Utd.	24	7	8	9	40	52	22
Bradford	25	7	8	10	37	50	22
Millwall	24	5	11	8	45	50	21
Barnsley	24	8	5	11	33	37	21
Bristol Rovers	24	8	5	11	39	51	21
Reading	24	9	2	13	41	43	20
Brighton	26	6	8	12	36	51	20
Halifax	25	5	9	11	33	53	19
Crystal Palace	24	4	9	11	26	40	17
Carlisle	24	4	7	13	28	51	15

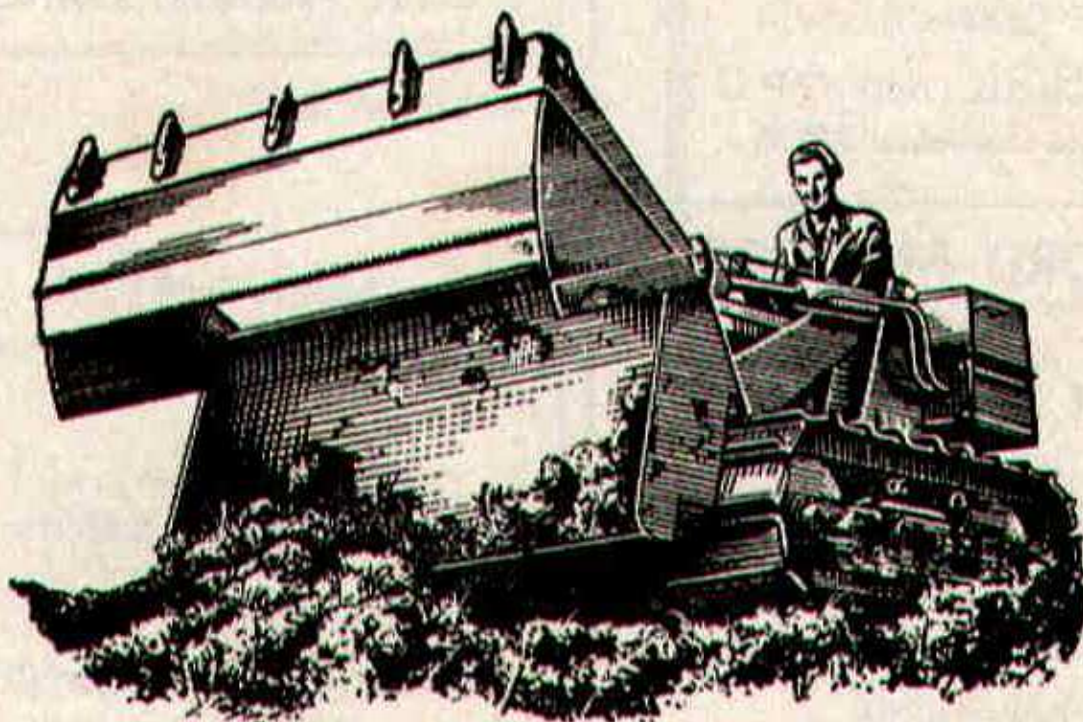
DIVISION III FIXTURE LIST

Date	Opponents	Ground	Result
August	18 BARNSELY	(A)	1-1
	21 COVENTRY CITY	(H)	4-1
	25 NORTHAMPTON TOWN	(H)	2-3
September	28 COVENTRY CITY	(A)	0-2
	1 QUEEN'S PARK RANGERS	(A)	2-2
	4 BRIGHTON and HOVE ALBION	(A)	1-1
	8 HULL CITY	(H)	2-0
	11 BRIGHTON and HOVE ALBION	(H)	5-1
	15 CRYSTAL PALACE	(A)	0-0
	18 CARLISLE UNITED	(A)	0-0
	22 WREXHAM	(H)	3-0
	25 DARLINGTON (Cup)	(H)	4-0
	29 HALIFAX TOWN	(A)	3-4
	October	2 BRISTOL ROVERS	(H)
6 WATFORD		(H)	3-1
9 BRISTOL ROVERS		(A)	0-2
13 BRISTOL CITY		(A)	2-2
20 READING		(H)	1-1
27 PORT VALE		(A)	1-2
November		3 (1) READING	(H)
	10 MILLWALL	(A)	4-3
	17 SOUTHEND UNITED	(H)	4-1
	24 (2) YEOVIL	(A)	2-0
December	1 NOTTS COUNTY	(H)	3-1
	8 BOURNEMOUTH and B.A.	(A)	0-0
	15 BARNSELY	(H)	2-1
	22 NORTHAMPTON TOWN	(A)	P
	26 BRADFORD	(A)	0-2
	29 BRADFORD	(H)	P
1963			
January	5 (3) LUTON TOWN	(A)	P
	12 QUEEN'S PARK RANGERS	(H)
	14 COLCHESTER UNITED	(A)
	19 HULL CITY	(A)
	26 (4) SHREWSBURY TOWN	(H)
February	2 CRYSTAL PALACE	(H)
	9 WREXHAM	(A)
	16 (5) HALIFAX TOWN	(H)
	23 WATFORD	(A)
	March	2 BRISTOL CITY	(H)
8 (6) READING		(A)
16 PORT VALE		(H)
23 SHREWSBURY TOWN		(A)
30 (S.F.) MILLWALL		(H)
April		6 SOUTHEND UNITED	(A)
	12 PETERBOROUGH UNITED	(H)
	13 COLCHESTER UNITED	(H)
	15 PETERBOROUGH UNITED	(A)
	20 NOTTS COUNTY	(A)
	27 BOURNEMOUTH and B.A.	(H)
May	4 (FINAL)		

H. HIBBERD LIMITED

40 NEWPORT STREET - SWINDON

PLANT HIRE



TRACTORS and SCRAPERS

BULLDOZERS

DROTT SHOVELS

J.C.B. and DINKUM DIGGERS

ROAD ROLLERS

TELEPHONE: SWINDON 6125

Hatton's Newsagency

A. J. D. Woodhouse and A. Smith

**Newsagents :: Tobacconists
Confectioners**

Agents for Wessex School of
Motoring

Main Booking Agents for Millers
Coaches

6 Regent Circus (near G.P.O.)
Telephone Swindon 22731

HULFORD MOTORS Ltd.

SELF DRIVE HIRE

Fleet of 1962 Fords
Populars - Anglias - Consuls

SHRIVENHAM ROAD

(200 yards from Football Ground)

Phone 4934

Large Car Park available

For High Class
Central Heating, Plumbing
Painting and Decorating
Electrical Installations
and Repairs

**NORTH WILTS
Sanitary & Heating
Co. Ltd**

NEWPORT ST., SWINDON

Phone 5373/4

WARNES (Swindon)

Electrical Contractors - Radio

Contractors to SWINDON TOWN

**160 COUNTY ROAD, SWINDON
9 SWINDON STREET, HIGHWORTH
7 CLIVE PARADE, SWINDON**

RIGHT WING

SWINDON

Turner

Owen (2)

Tro

Morgan (4)

McPherson (5)

Summerbee (7)

Hunt (8)

Smith (9)

Swindon Colours:

RED SHIRTS, WHITE SHORTS

**FOOTBALL
PINK**

Lazarus (11)

Barber (10)

Leary (9)

B

Large (6)

Keen (5)

Ingham (3)

A

Drinkwater

LEFT WING

QUEEN'S PARK RAM

WARNES T.V.

TO BE SUR

51 Commercial Road - Swindon

and Branches

(Swindon) LTD.

tors - Radio and Television

SWINDON TOWN FOOTBALL CLUB

ON
ORTH

PHONE 6346/7

PHONE 379

PHONE 6346/7

SWINDON

LEFT WING

Turner

Trollope (3)

McPherson (5)

Woodruff (6)

Smith (9)

Jackson (10)

Rogers (11)



These teams are subject to alteration

Leary (9)

Bedford (8)

McClelland (7)

Keen (5)

Malcolm (4)

3)

Angell (2)

Drinkwater

SWINDON PARK RANGERS

RIGHT WING

T.V. RENTALS

BE SURE

ad - Swindon - Phone 6486

and Branches

McILROYS

RESTAURANT

for morning coffee, luncheon and afternoon tea - in pleasant surroundings - you will find McIlroys are top of the 'league'.

Full table service, best Beers and Wines. Parties and Functions catered for.

McIlroys Restaurant

64-72 Regent Street

Tel. 5294



THE ALCOHOL FUEL

COATE GARAGE

REPAIRS - OVERHAULS - WELDING
SERVICING - REBORING - TYRES

Props. E. V. & W. H. Mattick

Marlborough Rd., Swindon

SUPPORTERS' CLUB NOTES

The payment of £5,000 by this Club to the Football Club, in December, was given wide publicity at the time by the courtesy of our local Press, but this is the first opportunity which we have had to mention it, owing to the postponement of the match on 29th December, with the result that the notes, which were written for that day, were not published.

The weather, with consequent cancellation of matches, has deprived the Football Club of several weeks' normal income, so that our gift, in the light of subsequent events, was made at a fortunate time.

It is very pleasant to regard this as a family Christmas Gift to the Football Club, for it results from some very hard work on the part of our Competition Secretaries, the regular efforts of our ticket selling Agents, and the loyal and sustained support of the thousands of friends who purchase tickets weekly, possibly with the hope of gaining some reward, and certainly with the intention of providing some additional support for the Football Club.

When the cheque was presented, Mr. F. N. Deane, on behalf of our Competition Organisers, informed the assembly that there would be no relaxation of efforts, for our target is a high one.

In addition to the main event of the evening—the presentation of the cheque—the proceedings were very enjoyable, and provided an opportunity for a useful informal exchange of views between Directors and Officials of the Football Club, and members of our own Committee.

HAVE YOU SIGNED ON YET

FOR
YOUR

SWINDON ECHO

4d.
WEEKLY

IF NOT THEN DO SO AT YOUR LOCAL NEWSAGENT
AND JOIN OUR GROWING TEAM OF READERS

For your pleasure try

RIVERSIDE LECHLADE LTD.

Tea Room and Gardens - Boating

4 Berth and 2 Berth Cabin Cruisers for hire, also Motor Boats,
Camping Punts, Rowing Boats, Canoes, etc. Parties catered for.

PRIVATE CAR PARK

Telephone: Lechlade 229

Little & Co. Ltd.

Try us for
Clothes for all
the family on
all occasions

31-32 FLEET STREET
SWINDON

Tel. 22831

THE POPULAR MEN'S & LADIES'
COMPLETE OUTFITTERS

We have a
reputation for
Value & Service
that is second
to none

SEE THE LOVELY SELECTION OF
CHOCOLATES AND SWEETS
Greetings Cards a Speciality

CECIL GREEN

CONFECTIONER AND TOBACCONIST

13 VICTORIA ROAD

Telephone 4416

SUPPORTERS' CLUB NOTES - continued

Arrangements for the evening were made by our own Social Secretaries, Mr. and Mrs. Ranger, to whom our best thanks are due. They work exceedingly hard in all sorts of ways behind the scenes.

The next major social event is a dinner to be held in February, of which we will give fuller particulars later.

At the time of writing we do not know if these notes will, in fact, be read, or even if the match at Luton will have been played.

There is a growing number of people who would prefer success in the League, rather than a good run in the Cup, but it must be confessed that we should all like to see Everton at the County Ground.

We are told that, when the teams met in 1911-12 (with Swindon winning and proceeding to the Semi-Final), Jock Macconachie, who later came to Swindon to end his playing career, was a member of the Everton team, and apparently had rather an unhappy afternoon against Swindon's outside right, Jefferson.

We regret that it has become necessary to increase the prices of our Club badges from 1/- to 1/3d. A new stock has had to be obtained, and the price to this Club is higher than previously.

We have, however, been able to maintain the lower charge for a longer time than most Clubs, owing to a large stock at the lower price having previously been held.

F. J. ROPER
DEVIZES RD.
SWINDON

Phone 22341

FERNDALE
FISHERIES
FERNDALE RD.
SWINDON

Phone 3614

**SWINDON'S
FINEST**

FISH and CHIPS

**CALL ON
YOUR
WAY
HOME**

F. J. ROPER
CLIFTONIAN
38 WILLIAM ST.
SWINDON
Phone 3785

**WE SHALL BE
WAITING
TO
SERVE YOU**

Menu

**Plaice
Hake
Cod
Skate**

F. J. ROPER
HIGH ST.
WOOTTON
BASSETT

F. J. ROPER
CROSS HAYES
MALMESBURY

SWINDON TOWN F.C. DEVELOPMENT FUND COMPETITION

WINNING NUMBERS

Week 28 — Saturday, January 5th to Friday, January 11th

Day	Prize	Winning No.
Saturday	£100	12942D
	£25	10142D
Monday	£20	3501D
Tuesday	£20	4952D
Wednesday	£20	3985D
Thursday	£20	9187D
Friday	£20	4069D

SWINDON TOWN F.C. SUPPORTERS' CLUB WEEKLY COMPETITION

WINNING NUMBERS

Week — Monday, December 31st to Saturday, January 5th

Day	Prize	Winning No.
Monday	£20	10455
	£5	1140
Tuesday	£20	1726
	£5	2702
Wednesday	£50	163
	£10	4178
Thursday	£20	14271
	£5	9379
Friday	£20	15140
	£5	13181
Saturday	£100	11422
	£20	14542

This space is reserved for

EDWIN H. BRADLEY & SONS LTD.

Builders - Swindon

Eric

(E. Ayliffe)

GENTLEMEN'S HAIRDRESSER

57/59 Faringdon Road, Swindon.

Phone 4569

APPOINTMENTS MAY BE BOOKED IN PRIVATE SALON

ALSTON & YOUNG LTD.

121-123 CRICKLADE ROAD, SWINDON.

Tel. 6671

Scooter and Three-Wheeler Specialists

Main Agents - LAMBRETTA - VESPA - TROJAN

First class after sales service

Open daily 9.0 a.m. to 7.30 p.m.

SUPPORT YOUR HOME

CIVIL DEFENCE

Plays a vital part in saving lives

in PEACE or WAR

Particulars:

CIVIC OFFICES, SWINDON

WISES CATERING

SERVICE

(Reg. Wise)

**Our Caterer for the past 14 seasons
Guarantees**

**A GOOD CUP OF TEA AT THE
COUNTY GROUND**

**A full range of Sweets & Cigarettes
at any of our five kiosks on your
way in. ENJOY YOURSELF!**

KEY OF THE BOARD

First Section

- A—Arsenal v. Burnley
- B—Birmingham C. v. Manchester U.
- C—Blackburn R. v. Wolverhampton
- D—Blackpool v. Aston Villa
- E—Bolton v. Leicester
- F—Everton v. Fulham
- G—Manchester C. v. Tottenham
- H—Nottingham F. v. Ipswich
- I—Sheffield Utd. v. Liverpool
- J—West Brom. A. v. Sheffield W.
- K—West Ham v. Leyton O.
- L—Chelsea v. Stoke
- M—Derby C. v. Portsmouth
- N—Leeds Utd. v. Huddersfield
- O—Luton v. Charlton
- P—Middlesbrough v. Cardiff
- Q—Newcastle v. Preston N.E.
- R—Norwich v. Grimsby
- S—Southampton v. Rotherham
- T—Swansea v. Sunderland

Second Section

- A—Walsall v. Plymouth
- B—Brighton v. Crystal P.
- C—Bristol R. v. Wrexham
- D—Carlisle v. Hull C.
- E—Halifax v. Reading
- F—Southend v. Coventry
- G—Aldershot v. Gillingham
- H—Bradford C. v. Hartlepoons
- I—Crewe v. Stockport
- J—Lincoln v. Chesterfield
- K—Oxford v. Darlington

BRETTS PET AND GARDEN SUPPLIES

32-33 COMMERCIAL ROAD

and

6 CROMWELL STREET - SWINDON

When thinking of your new
T.V. - Radio - Washing Machine - Refrigerator
make your **GOAL**

HOLMES & LUCAS

14 REGENT STREET - SWINDON

Stockists of all leading makes

Telephone 22526-4721

FOR ALL YOUR ANGLING NEEDS
CONSULT

FRANK WOODWARD

Swindon's Fishing Tackle Specialist

25 HAVELOCK ST., SWINDON
PHONE 3879

For Paints of Good Quality
H. S. HODGES & SONS
(SWINDON) LTD.

CRICKLADE RD. - SWINDON
PHONE 22422

Dulux, Brolac, Friary, Valspar,
Wallcharm, etc.

SOUTHERN LAUNDRY Co. Ltd.

Launderers and Dry Cleaners

STATION ROAD - SWINDON
TELEPHONE 4161

COMLEY'S

Modern Music Centre
26 HAVELOCK ST., SWINDON
RECORDS - MUSIC - INSTRUMENTS

Top Twenty 'Pops' always in stock
and wide selection of Jazz & Classics
Personal Supervision Phone 3874

FOOTBALL COMBINATION

Fixtures and Results to date

Date	Opponents	Ground	Result
August 18	SOUTHEND	(H)	3-1
21	MILLWALL	(A)	1-2
25	BOURNEMOUTH and B.A.	(A)	3-1
September 1	CHELSEA	(H)	0-2
3	WATFORD	(A)	2-2
18	QUEEN'S PARK RANGERS	(H)	3-2
26	SOUTHAMPTON	(A)	3-3
October 23	COVENTRY CITY	(H)	2-0
27	ALDERSHOT	(H)	0-0
November 7	LEYTON ORIENT	(A)	3-6
10	BRIGHTON	(H)	1-0
27	BRENTFORD	(H)	2-2
December 8	CHARLTON	(A)	2-2
11	FULHAM	(H)	6-1
19	PORTSMOUTH	(A)	3-1
22	BIRMINGHAM	(A)	0-3

1963

January 1	READING	(H)	P
9	READING	(A)	P
15	BOURNEMOUTH and B.A.	(H)	
19	SOUTHEND	(A)	
29	WATFORD	(H)	
February 4	QUEEN'S PARK RANGERS	(A)	
12	MILLWALL	(H)	
23	CHELSEA	(A)	
26	SOUTHAMPTON	(H)	
March 6	COVENTRY CITY	(A)	
9	ALDERSHOT	(A)	
19	LEYTON ORIENT	(H)	
23	BRIGHTON	(A)	
April 6	BIRMINGHAM	(H)	
9	BRENTFORD	(A)	
16	CHARLTON	(H)	
22	FULHAM	(A)	
30	PORTSMOUTH	(H)	

WILTSHIRE PREMIER LEAGUE

Fixtures and Results to date

Date	Opponents	Ground	Result
August 18	RADSTOCK	(H)	1-1
22	PINEHURST	(A)	1-4
25	STONEHOUSE	(A)	3-0
29	PINEHURST	(H)	1-0
September 1	PURTON	(H)	3-1
8	CALNE	(A)	2-0
15	DEVIZES	(H)	6-1
19	FROME	(A)	1-3
22	TROWBRIDGE	(H)	2-0
29	FROME	(H)	3-0
October 6	WARMINSTER	(H)	3-1
13	PEASEDOWN	(A)	2-1
20	CLANDOWN	(H)	6-0
27	PAULTON	(A)	1-1
November 3	WESTBURY	(H)	5-4
10	MELKSHAM	(A)	0-3
24	CHIPPENHAM	(H)	6-1
December 1	WOOTTON BASSETT	(A)	4-1
8	PAULTON R.	(H)	5-2
15	STONEHOUSE	(H)	4-0
22	PURTON	(A)	5-0
29	CALNE	(H)	P

1963

January 5	DEVIZES	(A)	P
19	WARMINSTER	(A)	
26	PEASEDOWN	(H)	
February 2	CLANDOWN	(A)	
9			
16	WESTBURY	(A)	
23	MELKSHAM	(H)	
March 2	CHIPPENHAM TOWN	(A)	
9	WOOTTON BASSETT	(H)	
16	SWINDON B.R.	(A)	
23	RADSTOCK	(A)	
	TROWBRIDGE (to be arranged)	(A)	

FORTHCOMING MATCHES

TUESDAY NEXT, JANUARY 15th, 1963

FOOTBALL COMBINATION

SWINDON TOWN

v.

BOURNEMOUTH

Kick-off 7.30 p.m.

SATURDAY, JANUARY 26th, 1963

DIVISION III

SWINDON TOWN

v.

SHREWSBURY TOWN

Kick-off 3 p.m.

TUESDAY, JANUARY 29th, 1963

FOOTBALL COMBINATION

SWINDON TOWN

v.

WATFORD

Kick-off 7.30 p.m.

G. A. STREETLY

Tobacconist and Confectioner

10 BOURNE ROAD - MOREDON - SWINDON

Telephone: 4956

ADVERTISING SPACE

IN THIS PROGRAMME

TO LET

Apply:-

SECRETARY,

SWINDON TOWN F.C.,

COUNTY GROUND, SWINDON

Have you purchased your ticket for the

**DEVELOPMENT
FUND
COMPETITION?**

TICKETS 1/- each

Draw at half-time today for

£100 & £25

other Prizes Monday to Friday

£20 EACH DAY

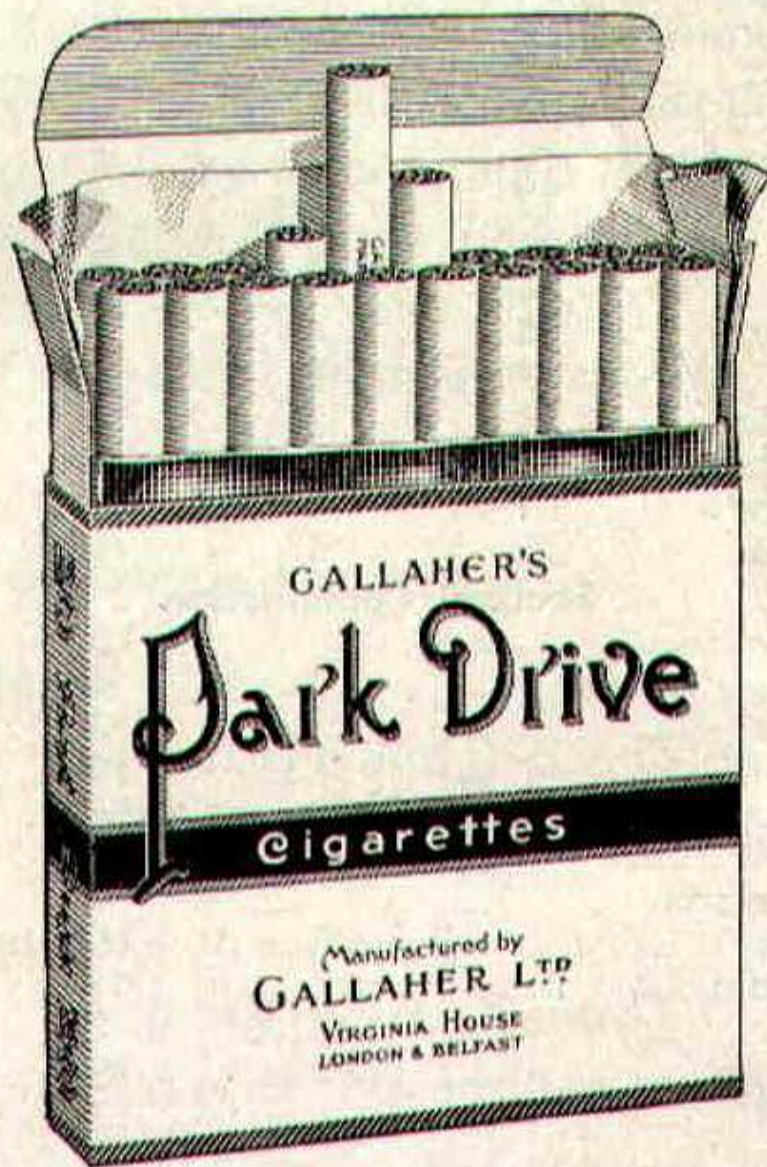
Results published daily in -

"Daily Sketch"

"Evening Advertiser" and

"Bristol Evening Post"

PARK DRIVE



for pleasure

PLAIN 20 for 3/5 TIPPED 20 for 2/10

PLAYERS APPEARANCES AND GOAL SCORERS

	Division III		F.A. Cup and League Cup	
	Appearances	Goals	Appearances	Goals
Turner	20	-	4	-
O'Hara	4	-	c	-
Wollen	21	-	4	-
Trollope	24	1	4	-
Morgan	24	-	4	-
Owen	19	-	2	-
Woodruff	24	1	4	-
Summerbee	15	2	4	-
Darcy	17	4	3	-
Hunt	23	10	4	3
Smith	24	11	4	5
Atkins	4	-	-	-
Smart	7	2	-	-
Jackson	23	13	4	2
McPherson	8	-	2	-
Stevens	1	-	-	-
Rogers	5	1	1	-

Football Combination

O'Hara	10	-
Hicks	4	-
Turner	2	-
Hellin	14	-
Dawson	16	-
Smart	13	3
McPherson	7	-
Harber	16	-
Shergold	13	c
Darcy	2	-
Stevens	15	15
Leggett	13	4
Weaver	9	3
Rogers	11	2
Colsell	2	-
Atkins	8	3
Summerbee	2	1
Mellor	3	-
Leyton	1	-
Jackson	1	-
Huxford	6	-
Owen	1	-

STAND TICKETS

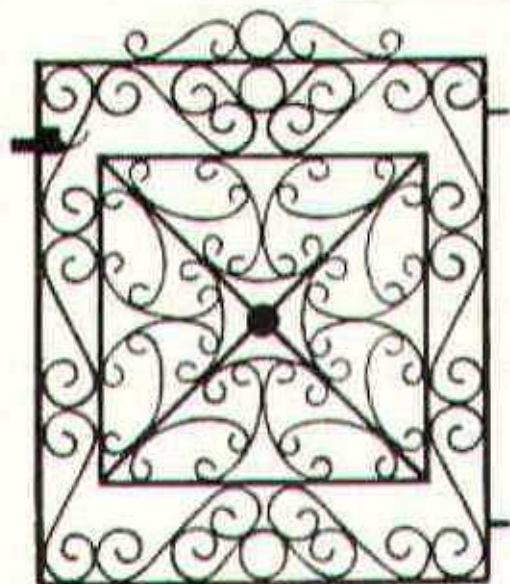
Tickets for seats in the Old and New Stands may be booked in advance. Postal applications should be accompanied by a remittance and stamped addressed envelope. Tickets ordered by telephone must be collected not later than 12 noon on the day of the match, otherwise they will not be reserved.

Prices for League Matches:-

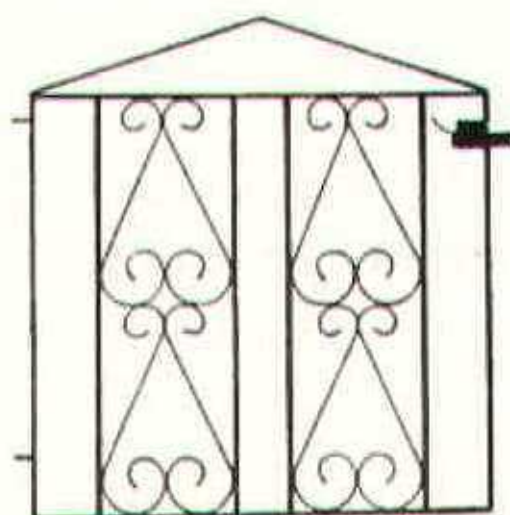
New Stand: Block C-6/6 (Centre)
Blocks B and D-5/6 (Side Stands)
Blocks A and E-4/6 (Wing Stands)

Old Stand: Centre Box-8/-
Block H-5/6 (Centre)
Blocks F, G and I-4/- (Side Stands)

Postal applications to: Secretary, Swindon Town F.C., County Ground, Swindon, Wilts. Telephone Swindon 22118.



T.G. 621



T.G. 626

Gates from 58/-
Singles and Doubles

If you live in the Swindon
area we will measure your
Gateway for you.

Our Decorative Ironwork
also includes:

FIRESCREENS
COFFEE TABLES
LAMPS
BRACKETS
CORNER TABLES
BALUSTRADES

SEND FOR FREE CATALOGUE
MARTYN LYNSHAW LIMITED

20 Boundary Works, Stratton Road,
SWINDON. TEL. 4177